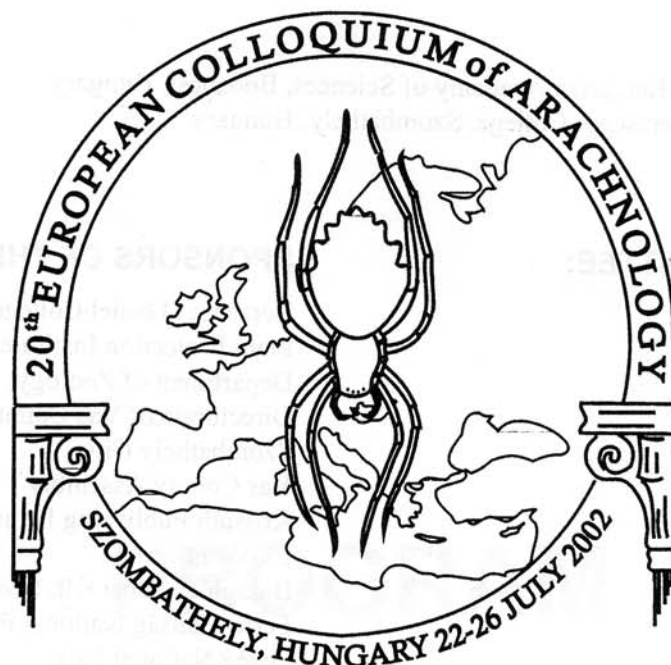


20TH EUROPEAN COLLOQUIUM OF ARACHNOLOGY



PROGRAM ABSTRACTS LIST OF PARTICIPANTS

Department of Zoology, Berzsenyi Dániel College, Szombathely
&
Plant Protection Institute
Hungarian Academy of Sciences, Budapest

THE 20TH EUROPEAN COLLOQUIUM OF ARACHNOLOGY

Official meeting of the European Arachnological Society
Szombathely, Hungary 22-26 July, 2002

ORGANISERS:

Plant Protection Institute, Hungarian Academy of Sciences, Budapest, Hungary
Department of Zoology, Berzsenyi College, Szombathely, Hungary

ORGANISING COMMITTEE:

Ferenc Samu (chair),
Csaba Szinetár (co-chair),
György Dudás,
János Eichardt,
Roland Horváth,
Balázs Kiss,
Teréz Márkus Szinetárné,
András Szirányi,
Éva Szita,
Tamás Szűts,
Ferenc Tóth

SPONSORS OF THE COLLOQUIUM:

Berzsenyi Dániel College
Plant Protection Institute HAS
Department of Zoology, Berzsenyi Dániel College
Directorate of Vas County Museums
Szombathely City
Vas County Assembly
Kossuth Publishing House
ÉlőVilág
Balogh és Társa Kft, Szombathely
Fertő-Hanság National Park
Őrség National Park
Balaton-felvidék National Park
FERROSÜT, Szombathely
Hungarian Ornithological and Nature
Conservation Society
Prospektus Printing House, Veszprém
BUDA PIÉRT Kereskedelmi Kft.
Vasi Volán Rt.
County Educational Centre
OLYMPUS Hungary Kft
Hungarian Natural History Museum, Zool. Section
Kinga Fotó, Szombathely
Kertész MTSZ, Szombathely

**In Memoriam
Imre Loksa**

Affinities of spider fauna of southeastern Palaearctic

Marusik, Yu. M. (1), Mikhailov, K. G. (2)

(1) IBPN RAS, Portovaya Str. 18, Magadan 685000, Russia

(2) ZMMU, Bolshaya Nikitskaya Str. 6, Moscow 103009, Russia

Southeastern extremity of Palearctic, an area lying south of Amur to Yangtze has fauna and flora very different from neighboring Siberia and Mongolia. This biogeographic area has several names Palearctic, Himalayan-Chinese Area, Amur-Japanese Area, Chinese Area, Chinese-Japanese Area, Manchuria, etc. Number of species living in this area exceeds 1500 species, over 600 were found in south part of the Russian Far East. Northern part of Palearctic (NE China, Hokkaido, Russian southern Far East) encompass not less than 500 endemic and subendemic species and more than 33 genera. Several families occurs within Palearctic or even Holarctic within Palearctic only (Anthrodidae, Ctenidae, Selenopidae, Trochanteridae). Rather many supraspecific taxa are present in East Palearctic in south Far East only (Atypidae, Leptonetidae, Mysmenidae, Oecobiidae, Oonopidae, *Bassaniana*, *Chrysso*, *Leucauge*, *Octonoba*, *Phoroncidia* etc). Number of joint endemics of northern Palearctic with neighboring Siberia is rather week. There are only 70 such species and 10 genera (cf. 100 species are endemic for both Siberia and Nearctic, or 220 for Siberia and Europe). By occurrence of several spiders taxa, fauna of Palearctic resembles very much those of south Caucasus. These areas even share some joint species that are absent in other parts of Palearctic. Two areas share several joint families and rather many genera lacking in East Palearctic north of 50° N.

NOTES